

THIS COPY IS PROVIDED ON A RESTRICTED BASIS AND IS NOT TO BE USED IN ANY WAY DETRIMENTAL TO THE INTERESTS OF PANDUIT CORP.

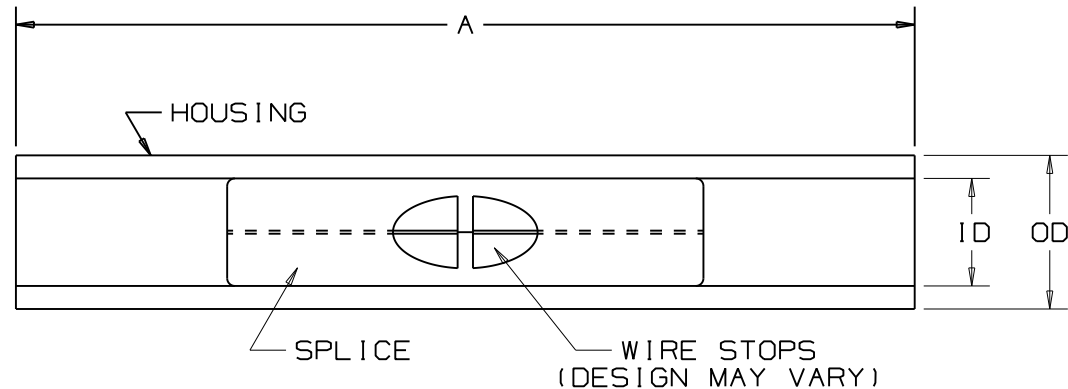
NOTES :

1. UL LISTED AND CSA CERTIFIED FOR :
  - A. 600 V MAX. VOLTAGE RATING
  - B. TEMPERATURE RATING OF INSULATION: 105°C (221°F)
  - C. SOLID OR STRANDED, COPPER WIRE
2. MATERIAL :
  - A. STAMPING (22-18 & 16-14) - .03 (0,8) THK COPPER, TIN PLATED
  - B. STAMPING (12-10) - .04 (1,0) THK COPPER, TIN PLATED
  - C. HOUSING - NYLON
3. ALL DIMENSIONS ARE IN INCHES EXCEPT DIMENSIONS IN BRACKETS WHICH ARE IN MILLIMETERS
4. INSTALLATION TOOLS : CT-100,CT-1550,CT-1551
5.
  - \* 12-10 AWG STRANDED AND 12 AWG SOLID COPPER WIRE WITH CT-1550 & CT-1551 TOOLS
  - \*\* 18-14 AWG WIRE RANGE WITH CT-1550 AND CT-1551 TOOLS
  - \*\*\* 22-16 AWG WIRE RANGE WITH CT-1550 AND CT-1551 TOOLS
6. WIRE STRIP LENGTH:
 

BSN18 & BSN14	- 9/32	<sup>+1/32</sup>	(7,1)	<sup>+0,8</sup>	<sub>-0</sub>
BSN10	- 9/32	<sup>+1/32</sup>	(7,1)	<sup>+0,8</sup>	<sub>-0</sub>
7. PACKAGE QTY:
 

A. STD	-L = 50
	-C = 100
B. BULK	-D = 500
	-M = 1000

PANDUIT PART NUMBER		WIRE RANGE (AWG)	COLOR CODE	DIMENSIONS in.			
PREFIX	PK			MAX WIRE INSUL DIA	A <sup>±.020</sup> <sub>(.51)</sub>	ID <sup>±.020</sup> <sub>(.51)</sub>	OD <sup>±.020</sup> <sub>(.51)</sub>
BSN18	-C -M	***22-18	RED	.115 (2,92)	1.15 (29,2)	0.13 (3,3)	0.20 (5,1)
BSN14	-C -M	**16-14	BLUE	.148 (3,76)	1.15 (29,2)	0.15 (3,9)	0.20 (5,1)
BSN10	-L -D	*12-10	YELLOW	.210 (5,33)	1.14 (29,0)	0.21 (5,3)	0.27 (6,8)



LISTED  
587H  
E52164



CERTIFIED  
LR31212

11	6/04	JHNU		REVISED NOTE 5 AND TABLE: EXPANDED WIRE RANGE FOR 22-18 AND 16-14 BUTT SPLICES.				
10	1/03	SAC	SKB	BSN10 DIM. A WAS <sup>1.18</sup> <sub>(30,0)</sub>	10539	LCA	TRO	
09	1/01	EJS	SKB	REMOVED INSTALLATION TOOLS CT-500,CT-550 FROM NOTE 4,NOTE 1-B WAS 221°F (105°C) MAX. TEMP. RATING, METRIC DIM. WERE 2 PLACES	09077	JAC SKB	TRO	
				REMOVED 22-16,18-14,14-10 AWG WIRE RANGE WITH INSTALLATION TOOLS FROM NOTE 5, NOTE 6 WIRE STRIP LENGTH FOR PART BSN18 & BSN14 WAS 7/32, STRIP LENGTH WAS 5/16 FOR PART BSN10				
08	1/98	DL	SKB	UPDATED WIRE STOP, NOTES, & CHART	07265	LA	TO	
REV	DATE	BY	CHK	DESCRIPTION	ECN #	CUST	PM	

A41182\_11

**PANDUIT** CORP.

TINLEY PARK, ILLINOIS

NYLON INSULATED BUTT SPLICES

DRAWN BY	CHK'D	SCALE	DRAWING NO.
FES	RLS	NONE	A41182